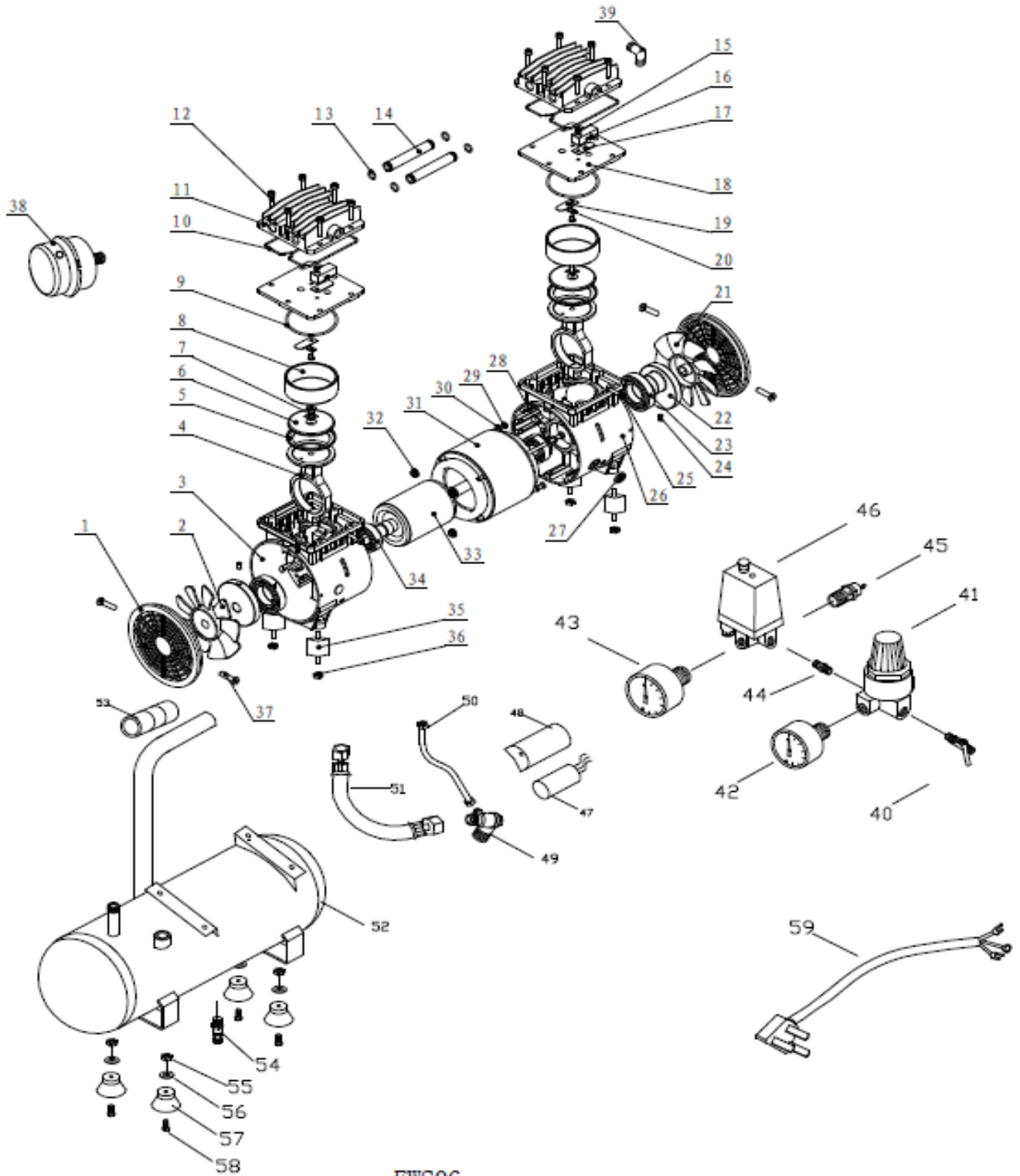




Referencia: **PRO 6 SILENT**



EWS06



Referencia: **PRO 6 SILENT**

| | | | | | |
|----|-----------------|----|-----------------|----|----------------|
| 01 | covery | 11 | cylinder head | 21 | right fan |
| 02 | left fan | 12 | bolt | 22 | shaft seal |
| 03 | leftcrankcase | 13 | obturatingring | 23 | bearing6006-2Z |
| 04 | connectingrod | 14 | connectingpipe | 24 | bolt |
| 05 | piston cup | 15 | bolt | 25 | bolt |
| 06 | Binder plate | 16 | limitedblock | 26 | right cankcase |
| 07 | bolt | 17 | valve | 27 | protectionring |
| 08 | cylinder | 18 | valve | 28 | bolt |
| 09 | obturatingring | 19 | valve plate | 29 | bolt |
| 10 | obturatingring | 20 | washer | 30 | spring |
| 31 | rotator | 41 | regulator | 51 | pipe |
| 32 | nut | 42 | 40gauge | 52 | tank |
| 33 | stator | 43 | 50gauge | 53 | handle sleeve |
| 34 | bearing6203-2Z | 44 | connect | 54 | drain cock |
| 35 | vibrationcolnmn | 45 | safety valve | 55 | nut |
| 36 | spring | 46 | pressureswitch | 56 | washer |
| 37 | self tapping | 47 | capacitor | 57 | cushion foot |
| 38 | air filter | 48 | capacitor cover | 58 | bolt |
| 39 | elbow | 49 | checkvalve | 59 | plug |
| 40 | Deflationvalve | 50 | unloading tube | | |